

# Ship's Log

# Tampa Bay Ship Model Society

A PARTNER OF THE FLORIDA MARITIME MUSEUM AT CORTEZ

Meeting of March 24, 2015

[tbsms.org](http://tbsms.org)

## President Ed Brut

1516 Arizona Ave. Dr., St. Petersburg FL 33703 727  
522-5724 dttsa1@msn.com

## Secty/Newsletter Editor Irwin Schuster

8503 Portage Ave. Tampa, FL 33647-1707  
813 866-1442 irwin.schuster@verizon.net

## Treasurer George Fehér

8675 15th Lane No. St. Petersburg, FL 33702

**Webmaster** Phillip Schuster. Contact Sec/Ed

## Meetings

are typically held at 7:00 p.m. on the fourth Tuesday of each month except December (none).

## Location

is the lower level of Trinity Lutheran Church, 411-5th St. N., St. Petersburg. From I-275, Exit at I-375 East to second exit (4th Ave. N.). Proceed to traffic light at 5th St. N., turning left. Church is on right. Parking is to the left of the church.

## Objectives

This Society is an organization of model builders, historians and artists who encourage the construction of nautical models, creation of marine art, and research in maritime history, at every level of expertise, through the exchange of ideas and presentations.

## Membership

There is no charge to attend meetings, and all interested parties are invited. Dues are \$12. (this year), annually, payable in January.

## Presentations

Members and guests are encouraged to bring in projects past and current, plans, modeling problems or maritime-related items of interest for discussion, or inclusion in the Ship's Log.

**Skipper Brut** called the meeting to order with another large crew aboard. **George Fehér**, Treasurer, pronounced a moderate increase in our cash reserves, and Capt. Brut reminded that the Wings, Wheels and Keels event would take place in Venice on the upcoming Sat. (now passed). And, that the

Pelikan IPMS event would take place in May, with all materials, eras, scales, etc. being invited. TBSMS voted to sponsor two, \$30. awards packages (1st - 2nd - 3rd). The two categories selected, it turns out, have been spoken for, so others have been selected by members who belong to both clubs. Done deal.



Jerry Hughes is showing fine progress on this PANART Armed Launch of ca 1800. It is a crowd-pleaser with lots of accessorizing components.

**Next Meeting**  
**Tuesday, April 28, 7:00 p.m.**



## Show & Tell

**George Fehér** displayed a GULFSTREAM – Fine Scale Models 1:350, GS 9302 kit-in-waiting, of a resin, Type 9, U-505, U-Boat with its photo-etch panel. It represents a mid-war design ca. 1944, says George. He bought it about 30 years ago from HOUSE OF HOBBIES when it was still in Clearwater. He allowed that the guns were somewhat crude and he was finding substitutions. He also showed related books: U-505, The Final Journey by James E. Wise Jr., and U-Boats in action, squadron/signal publications; Warships No.1.

**Art Austin** brought a couple of models; a double ship's wheel built from a MODEL EXPO kit about 20 years old and likely no longer available, and a sort of pink-sterned open sailing vessel of unknown scale with a huge staysail. Anybody have any idea what this is?

**Larry Sadler**, newly signed on, introduced himself as a long-time ship modeler, winning 1-2-3 in a ship modeling category of a recent Wings, Wheels & Keels Venice show. Larry started with STERLING kits after a surgery but now builds scratch and repairs anything that comes along. He has built the Baltimore Clipper, Harvey, Victory, and another that I understood to be Mandalore but my search only turns up starships of that name. He is considering a COREL Sovereign of the Seas, which he concedes will overpower his house which already contains some 20 vessels.

**GS-9302**  
**1/350 GERMAN TYPE IXC U-BOAT**





The Type IX U-boat was built as a high endurance, long range submarine, able to operate in the Gulf of Mexico and western Atlantic. Their greater size, range and speed made them less maneuverable and slower-diving than the Type VII boat. They were also more expensive and took longer to build than the Type VII's. As a class, Type IX's were very successful, averaging over 100,000 tons

ing tower had been enlarged for added anti aircraft guns.

meters; draft (surfaced): 4.25 meters.

000 h.p.

draft:

7.5 knots.

meters

pedo tubes

with a very dark gray below the waterline. She was heavily weathered

m of Science and Industry in Chicago, Illinois.

Gulf Stream Models. Copyright 1993. All rights reserved.

manicure scissors, pin vise, assorted small bits, small files, sandpaper,

(super glue) type of glue is recommended. It is best to leave the

off with manicure scissors or a knife on a hard surface.

the parts go. Drill out pilot holes for guns, rudders, diving planes,

provided for prop shafts and periscopes.



conditions on bottom of breech to breech.

9. 2cm guns: mount on pedestals on upper gun platform, bend



**George Fehér has big plans for a little resin kit by GULFSTREAM: 1:350.**



**Art Austin brought a couple of charmers.**



**Guy Hancock** feels he has brought his Flattie project to a near close, with added cockpit details and bellied sail. He allows that the belly does not depict the boat under sail, but perhaps drying sails on a windless day. What is next on his list?

**Charlie Cooper** displayed a couple of model liners from the gift shops of their prototype ships on which he enjoyed cruises: Oceanic and Princess Marguerite. The latter plied Alaska coastal waters and was transformed into a ferry out of Seattle. Scales are unknown (perhaps even to the manufacturers).

**Steve Sobieralski**, a very early and long-time member of our club who has been otherwise occupied for quite a number of months, brought a couple of destroyers and demonstrated his vast historical knowledge by explaining the transition in size, between the two samples. The larger, HMS *Cossack*, is a Tribal class of the mid thirties. Steve told, and Wikipedia agrees, "She became famous for the boarding of the German supply ship Altmark in Norwegian waters, and the associated rescue of sailors originally captured by the Admiral Graf Spee. She was torpedoed by U-563 and sank on 27 October 1941." Originally, Steve explained, the ships were "Torpedo Boat Destroyers" and transitioned in mission. This model kit, of HMS *Velox*, was an early resin experiment. *Velox* was launched in 1917, converted to a long-range escort in 1942 and scrapped in 1947, according to my diligent researcher Wikipedia. So this small, fast vessel was designed to defend against the craft deploying torpedoes, essentially bombs at the distal end of long spars, that were used by attempted attachment under the waterline of wooden hulls.



**Guy Hancock has come to the end of the Flattie Project, adding cockpit accoutrements and belly in the sail.**



**Charlie Cooper brought souvenirs from a couple of ocean voyages, on the liners Oceanic and Princess Marguerite.**



**Steve Sobieralski gave an illustrated lecture on the evolution of Destroyers, with samples HMS Cossack and HMS Velox.**



**Keith Van Husen** showed a recent completion of a *Polacca* scratch built from AMATI 1:150 plans reduced to 1:200. An enormous amount of stern decoration is involved. Keith also used plans from MODELARSTWO OKRETOWE, a Polish monthly, and finally, he added lighting to the lanterns with grain-of-wheat lamps.

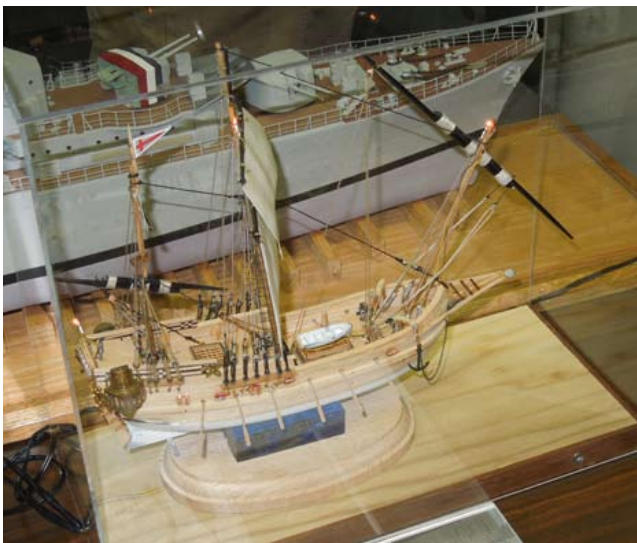
**Jerry Hughes** returned his PANART *Armed Launch*, with bottom painted with INTERLUX polyurethane. The airbrushed bottom will likely stand up for many seasons without refinishing, being the real thing. Jerry applied the finish with airbrush, and claims it is highly opaque. Shown on Page 1.

**Charlie Sharp** displayed his third model, a galley in process, with a required finish date far sooner than he would like. The model is built of basswood and stained with Golden Oak, making it look quite antique. The shape, Charlie says, utilizes the same frame pattern over most of its length. It will have 90 oars, propelled by 180 men, and their seating accommodation will be his next task. This model is theoretical, designed on the basis of similar era, multi-remes. Charlie did not draw plans, but pitched right in with construction.

**Ed Brut** showed a "paperweight class" scratch model he titled "A Sentinel Forgotten." This mini-diorama depicts a floating mine, as residue of battle. The sphere is an acrylic ball with fuses from tubular rivets, scrap chain, and painted art gel for water.



**Ed Brut displayed a minimalist diorama of a runaway mine.**



**Keith Van Husen showed an impressive scratch effort on a generic Polacca at 1:200.**



**Charlie Sharp has a near impossible deadline to finish this conjectural galley scratch built, based on similar larger vessels of the era.**



**Sec/Ed** presented a few odds and ends: a shop-made waterline scribe, a Micro•mark "Yankee" drill with (0) mini-chuck, and single and double cherry (half) blocks being made for the Gulf Coast Scow Schooner in process. The contours of the blocks were "milled" on my PREAC saw and drilled in two directions with my MicroLux Standard 3-speed Drill Press. This last uses rubber band belts as replacement for the \$9.95 demised Drive Belt.

Regarding the Micro Drill device, it fell apart after a half-dozen or so holes drilled, but was quickly replaced at no cost, by MICRO•MARK. I re-attached the cap with ZAP, but the cap does not rotate as it should, to perform as designed. So, essentially, the original is a pin-vise now.

**Howard Howe** demonstrated casework for his growing RC marina by developing a system of wall-mounted storage. Howard builds his cases with clipped-on covers, the clips of which serve as lifting handles. His wife, also a licensed (water) pilot, decided that the bare wall did not convey the requisite romance and painted sea and sky-scapes. Howard uses epoxy for assembly. RDV silicone was also mentioned.

**Howard Howe is saving shelf space by developing a wall mounted encasement system for his RC marina.**



**ISchus the Sec/Ed brought a few items appropriate to recent discussions: WL Scriber, a MICRO•MARK mini-Yankee drill and a solid hull with card-stock lap-strake planking (with insufficient attention to plank runs - therefore set aside).**





**Joe Rubin** stood to discuss the process of choosing a subject for his upcoming RC project based on the 3/16" dia. brass shaft and ball bearings he has in hand. What era, what type, what power plant? Das Schnellboot is the answer.

Again, my reliable Wiki-staff reports as follows: E-boat (German: *Schnellboot*, or S-Boot, meaning "fast boat") was the Western Allies' designation for fast attack craft of the Kriegsmarine during World War II. The most popular, the S-100 class, were very seaworthy, heavily armed, and fast – capable of sustaining 43.5 knots (50 mph) and briefly accelerating to 48 knots (55 mph). These craft were 35 metres length (114' 10") and 5.1 metres beam (16' 9"), half again longer and much sleeker than any of the Allied PT boat. Their diesel engine propulsion, had substantially longer range (approximately 700 nautical miles) than the gasoline-fueled American PT boat and the generally similar British Motor Torpedo Boat (MTB).

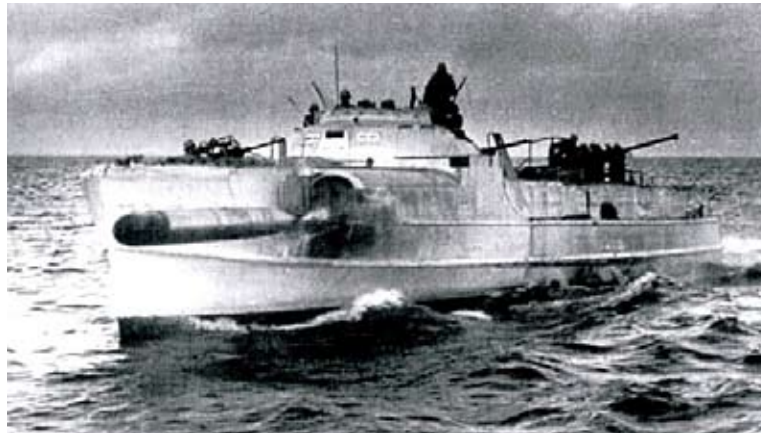
Confused about E vs. S designation? Allies called them E-, Germany called them S-.

**Paul Anderson** of Lake Mary writes: I finally met **Mike Marcus** (former TBSMS member) today at the annual regatta of the Port Orange Ship Modelers held at a park in Daytona Beach. I hope to check out one of their regular monthly meetings next month. Thanks for helping me make the contact. I have attached a few pictures (poor cell phone quality) of the event. They meet about 45 minutes from where I live and have both RC and static modelers.

**The Boucher Tug/Fisherman** shown in the last ShLog was acquired by **Dave White Nautical Antiques** of Maine & Florida, who will repair it and add it to his inventory.

**Pelikan's Pelicon'15**: Mid-May will see Pelikan (IPMS) sponsor Pelicon'15.

Visit [www.pelikanclub.org](http://www.pelikanclub.org) for details:

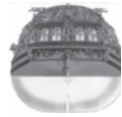


A typical Schnellboot of WW II, being considered by Joe Rubin as a fitting vehicle for keeping his RC equipment and power plant dry.



Paul Anderson sent these shots of the Port Orange Ship Modelers get-together in Daytona.





**Now Over, but:** The members of Wings, Wheels & Keels hope to see you at our 20th Annual Spring Model Show on Saturday, March 28th. Once again, the show will be (was) held in Woodmere Park, 3951 Woodmere Park Blvd, Venice, Florida 34293. Doors open at 9:30am. Registration closes at 12 noon, when a "Make 'n Take" for youngsters will begin. Award Presentations start at 3pm. This year a Special Award for the "Best Marine Corps Aircraft" (Any Era, Any Scale) will be presented. As a reminder, we have awards in every category, as well as Best Of Show, Peoples' Choice, Best Non-Military and Best Military Finish. The Model Entry Fee is \$10 for all the models you want to enter. General Admission is Free. All vendor tables will be Sold-Out and the raffle items look great. Most importantly, we're looking forward to meeting new friends, looking at great models and talking with you. – **Ken Zuk** WW&K 941-426-0774

**Milton Thrasher** sent tether boats 1938, Skip and Betty sent him by Kent Lund of Detroit. Visit [www.tetherboat.com](http://www.tetherboat.com). Scratch-built boats and engines. "Until then," Kent adds, "When in the Detroit area, you're welcome to stop by the Vintage Model Speedboat Works for a cup of coffee and some talk about old model boats." Know of an old model race boat or runabout model or former race club member? Give Kent Lund a call at (248) 548-2100..

From friend **Alex Bellinger** via **Len Burgess**:  
VISIT <http://www.modelshipbuildingsecrets.com/resources.html>

Byron Rosenbaum advises...

**L'Hermione Voyage 2015**

[http://youtu.be/gQffmYYcs\\_s](http://youtu.be/gQffmYYcs_s)

<http://youtu.be/QoOd1w0NjWI>



Photos of these two wonderful old tetherline racers were sent by Milton Thrasher. The owner, Kent Lund, brings them, along with others, to appropriate maritime model events.

May 16<sup>th</sup> & 17<sup>th</sup> 2015  
Oldsmar, Florida

**Pelican '15**

Hampton Inn & Suites  
Tampa Northwest / Oldsmar  
4017 Tampa Road  
Oldsmar, FL 34677

For more information fly on over to: [www.pelikanclub.org](http://www.pelikanclub.org)

Search for IPMS Pelican '15 to find requirements and fees for this upcoming event.



Insofar as anything found on the internet can be believed, I believe that this, purported to be Steve Jobs' yacht, *Venus*, is the ugliest vessel of any size, use or era, going away.... and I wish it would.



**LOCAL R/C:** In local news, the reorganization of the Pinellas County RC clubs is herein explained by their founder. *I was a member of the BAEB for several years then was the commodore in 2013. It was a wonderful club, great boats and wonderful discussions. Unfortunately several members decided to bring non-scale sailboats and it grew like a bad wart. Then it became "bring what you got" so it covered the high-speed hydros. Well, it didn't take a but a few near misses on boats that took many hours to complete for us to leave the BAEB. The fun of scale boats went away as there were very few at meets, mostly sail and a few high-speed boats. That is when I, and a few others, decided to meet on our own. I named the group "Suncoast Scale Model Boat Club" which was the original club I co-founded in 1976.*

*This past year we grew and have a good selection of scale boats at our meets at Lake Seminole Park on the 1st & 3rd Sundays of each month. We have no officers, no treasury, no dues or fees. I hope that you would relay this on to your membership as we are not competing clubs, but rather run hand in hand. If there are members in the TBSMS that want to operate scale model boats in an environment with other of the same wants they might want to visit one of our meets. Ask Howard Howe – he has been to a number of our meets.*

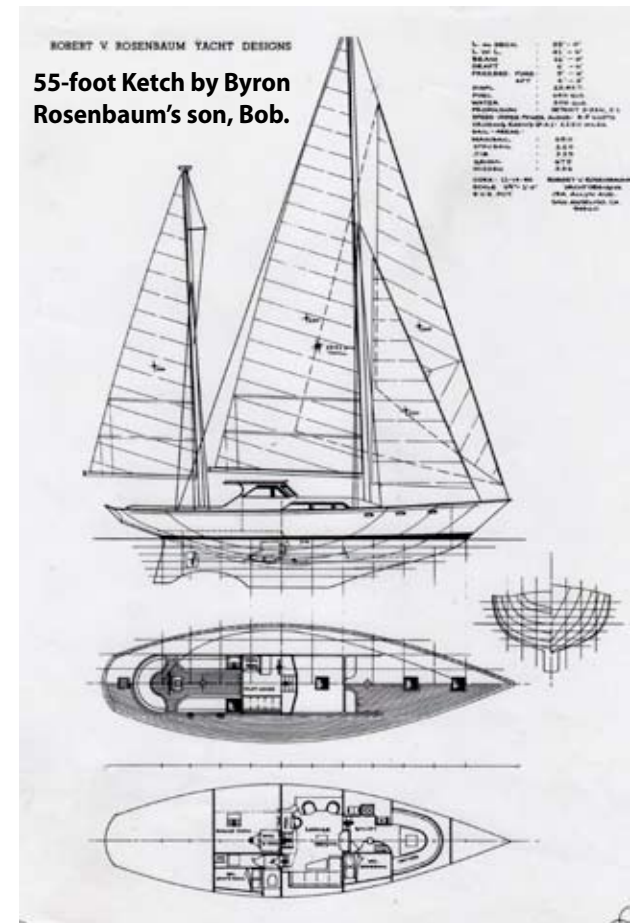
*I just thought I would clear up what happened that many of us left the BAEB. I enjoyed reading a few of your Journals and the photos in your gallery. I have admiration and respect for my fellow scale model boat and ship builders.*

Sincerely,

**Lew Zerfas**, Suncoast Scale Model Boat Club

If you haven't seen the "Liverpool-Class lifeboat, A RNL1 1945 lifeboat at 1:18 scale: A Call for Updating the Dockyard-style of Modeling," by Hubert Mallet, search it out. It is like Disneyland vs Rick's Rattlesnake Ranch in what he does vs. what I do in wood and using every other technology to create a "Honey, I shrunk the boat" fabrication. This is the most significant article published in the NRJ in the recent era, in my humble opinion. In essence, it recommends using the tools we now have, through technological innovation, when they can do a better job than 18th century's cutting edge implements. – **Sec/Ed.**

**Byron Rosenbaum** reports from Miami that currently his back is not allowing him to work on his Golden Gate diorama, but has his next project lined up; a 55-foot Ketch from the drawing board of his son Bob, a SanFran Naval Architect.



### Top Ship Shop Tips

*Occasionally I take stock and review what I do routinely and how I might make my life easier. After a lot of years of modeling I have come up with a few recent items. To wit:*

- Keep a retired dish towel clipped to a corner of your bench. It is really handy to wipe hands, brushes, glue toothpick and such on.
- Keep a small, capped container of water on the bench top. Saves a lot of trips to the sink.
- Keep a small, capped container of dilute white glue for "fixing" rigging, coils, stiffening rope ends.
- Again... emery boards are just so handy. Stiff Sandpaper! Snip to shape, buy in big packs at a Dollar Store. – **Sec/Ed.**

**Got something you don't need?** Tell me about it and I'll put it here. I'll kick it off with something a bit off subject:

Long Time member and past Treasurer **Norm Jacobs**, has a grandson who had an unfortunate accident at GaTech. Please visit: [gofundme.org/teamclark](http://gofundme.org/teamclark)



## SHIP QUEST

*Is Your Model Ship in Need of Repair?  
Are you Looking to Have a Model Ship Built?  
"YOUR SHIP QUEST HAS ENDED"*

**Lawrence R. Sadler, Sr.**  
Master Scale Historic Model Ship Builder,  
with over 50 years of experience.

9428 Sarazen Place, Palmetto, FL. 34221  
Phone: 941-757-9750  
Email: [shipquest@yahoo.com](mailto:shipquest@yahoo.com)

## THE NAUTICAL RESEARCH GUILD

"ADVANCING SHIP MODELING THROUGH RESEARCH"

Annual membership Includes our world renowned quarterly magazine, Nautical Research Journal, which features photographs and articles on ship model building, naval architecture, merchant and naval ship construction, maritime trade, nautical and maritime history, nautical archaeology and maritime art.

Other benefits include discounts on annual conferences, ship modeling seminars, NRG products and juried model competitions which are offered exclusively to Guild members. We hope you will consider joining our ongoing celebration of model ships and maritime history.

**YEARLY MEMBERSHIP**

\$48.00 USA  
\$60.00 Foreign




For more information contact us at [www.thenrg.org](http://www.thenrg.org)